

Installation Instructions

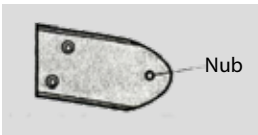
Bead Chain/Cord Tension Lock & P-Clip Safety Tensioner



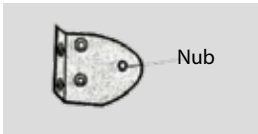
Tools Needed



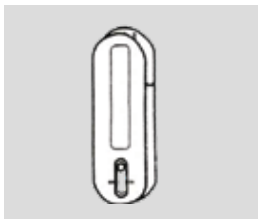
Fasteners



Inside Mount Bracket



Outside Mount Bracket



Drive Tension Device



Slider

Important*

It is imperative that the tension lock for bead chain be properly secured to the wall or window frame to reduce a child's access to the chain. Young children and pets can wrap bead chains and cord loops around their necks and strangle. Always keep the bead chain secure and out of the reach of children and pets.

Caution

The Tension Lock will be attached to the bead chain. The shade will not operate properly unless the body has been attached to the inside or outside bracket. Additional parts will be sent separately.

The Cord Tension Lock can be installed inside a window casting with the inside mount bracket, or outside mount with the outside mount bracket. Make sure the Tension Lock is not placed in the path of the bottom rail or fabric.

INSTALL THE TENSION LOCK

Inside Mount

Attach the lock to the inside mount bracket with the short screw. The nub on the bracket fits into the back of the screw hole on the lock.

Pull down on the bracket, align the center of the screw hole with the indicator line on the lock as shown.

While holding the lock firmly in place, check if the loop can move freely through it.

>If the Bead Chain Tension Lock locks onto the loop, it is too loose and the bracket and lock should be moved down.

>If the chain does not run freely through the lock, it is too tight and the bracket and lock should be moved up.

Mark and pre-drill the screw holes.

Pull down on the bracket and lock, align it with the drilled holes, and mount the bracket to inside the window casing with the two long screws.

Check to ensure the chain can move freely through the lock without engaging the lock.

INSTALL THE TENSION LOCK

Outside Mount

Attach the lock to the inside mount bracket with the short screw. The nub on the bracket fits into the back of the screw hole on the lock.

Pull down on the bracket, align the center of the screw hole with the indicator line on the lock as shown.

While holding the lock firmly in place, check if the chain can move freely through it.

>If the Bead Chain Tension Lock locks onto the chain, it is too loose and the bracket and lock should be moved down.

>If the chain does not run freely through the lock, it is too tight and the bracket and lock should be moved up.

Mark and pre-drill the screw holes.

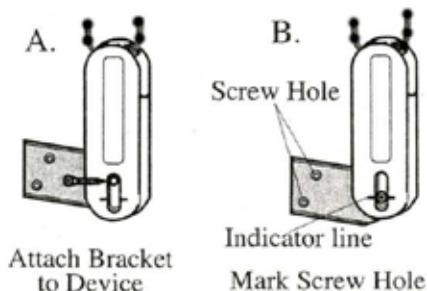
Detach the lock from the bracket by removing the short screw.

Align the bracket screw holes with the drilled holes and mount the brackets to the wall with two long screws.

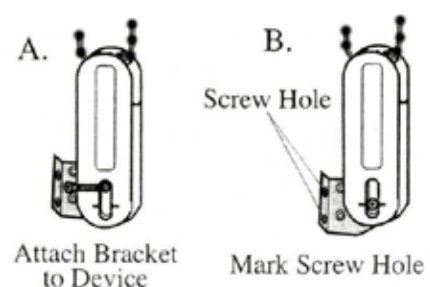
Reattach the lock to the bracket with the short screw.

Check to ensure the chain can move freely through the lock without engaging the lock.

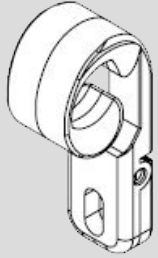
Inside Mount



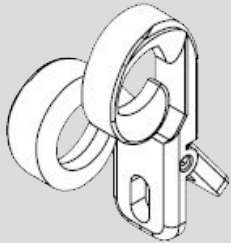
Outside Mount



Installation Instructions



P-Clip Closed



P-Clip Open

IMPORTANT: Bead chain and/or cord loop must have slight tension at all times to comply to child safety regulations. Shade will not operate without P-Clip properly installed.

INSTALL THE P-CLIP SAFETY TENSIONER

Inside Mount

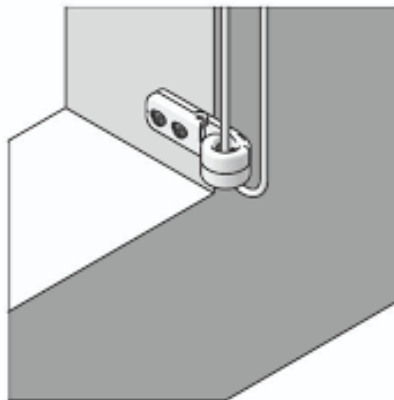
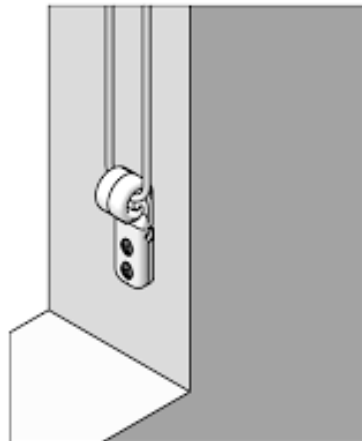
Determine where to install P-Clip without rubbing the edge of material.

Squeeze with index finger and thumb, hold in or around window as needed and apply slight tension to bead chain. Make sure chain still flows through P-Clip.

Make a pencil mark in screw hole and predrill with a small drill bit or awl.

Place provided screw into P-Clip and tighten.

Check for proper operation of shade.



INSTALL THE P-CLIP SAFETY TENSIONER

Outside Mount

Determine where to install P-Clip without rubbing the edge of material.

Squeeze with index finger and thumb, hold in or around window as needed and apply slight tension to bead chain. Make sure chain still flows through P-Clip.

Make a pencil mark in screw hole and predrill with a small drill bit or awl.

Place provided screw into P-Clip and tighten.

Check for proper operation of shade.

