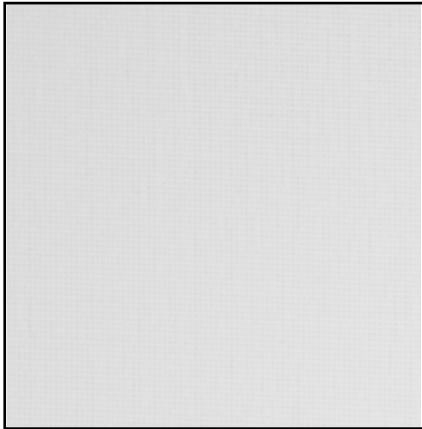


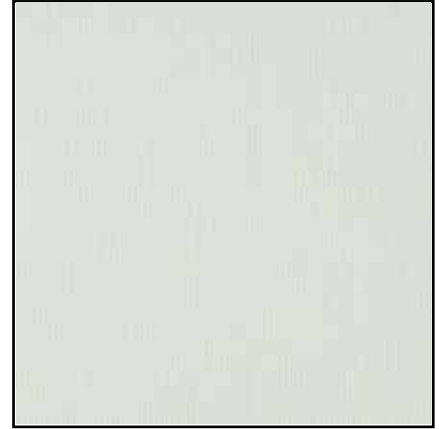
All colors are available in both 3% and 5% openness



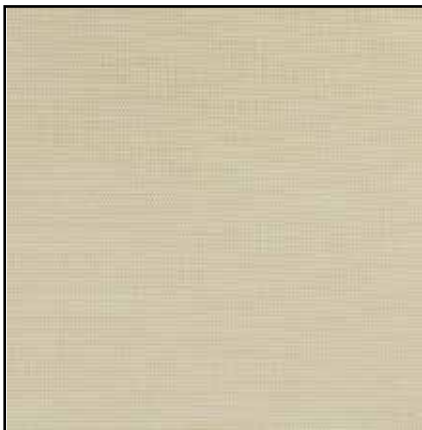
White 885



Linen 455



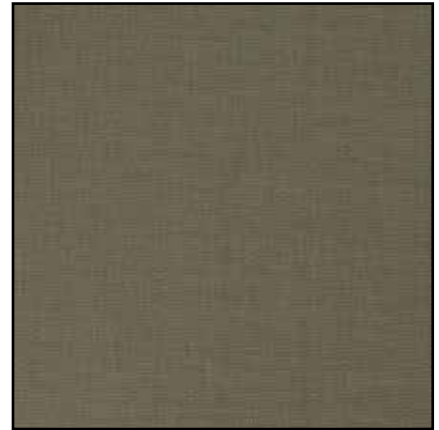
Stone 820



Pebble 610



Cappuccino 148



Sable 714

NFPA 701 FR test results are located
in the Materials Library at www.lafvb.com
Select Product Type: Shades
Select Product Name: Genesis Shades

Other non-stocked colors may be available.
Contact our Contract Department.



Cocoa 208



Charcoal 185



Shade Fabric Specifications

Fire Classification: NFPA 701-10 TM#1, California US Title 19, CAN/ULC-S109-03 (Small Flame Test),

Bacterial and Fungal Resistance: ASTM E2180 and ASTM G21

Environmental Certification: Certified to GREENGUARD and GREENGUARD Gold standards for low chemical emissions into indoor air during product usage.

Lead Free: RoHs - Lead Free

Standard Uses: Roller Shades, Panel Track

Warranty: Limited Lifetime Warranty

Care and Cleaning: Remove dust with vacuum cleaner or compressed air. Do not scrub. Do not use solvents or any abrasive substance which might damage the coating of the fabric. Clean with a sponge or a soft brush dipped in soapy water using mild detergent. Rinse with clean water. Leave the shade down until completely dry. You can also very gently rub the fabric with a clean white pencil eraser to remove small stains.



M Screen (Dimensions)

Fabric Width: 120"

Not Available Railroaded

Composition: 36% Fiberglass, 64% PVC

Weight - 3% Openness: 12.7 oz/sq yd. ± 5%

Weight - 5% Openness: 11.3 oz/sq yd. ± 5%

Fabric Thickness: .022 in ± 5%

UV Blockage: 97% for 3% M Screen

UV Blockage: 95% for 5% M Screen

Fenestration Properties for M Screen 3% and 5%

	Ts		Rs		As		SHGC/G Value				DG	
							Tv		CL-S			
	3%	5%	3%	5%	3%	5%	3%	5%	3%	5%	3%	5%
885 White	18	19	71	71	11	10	16	16	0.32	0.32	0.34	0.34
455 Linen	15	19	64	61	21	20	11	15	0.36	0.38	0.36	0.37
820 Stone	21	21	62	61	17	18	18	18	0.38	0.38	0.37	0.37
610 Pebble	21	22	51	50	28	28	16	18	0.44	0.45	0.41	0.41
714 Sable	4	6	12	13	84	81	4	5	0.65	0.64	0.53	0.53
185 Charcoal	3	3	4	4	93	93	3	3	0.69	0.69	0.55	0.55
208 Cocoa	3	5	5	5	92	90	3	4	0.69	0.69	0.55	0.55
148 Cappucino	5	7	13	13	82	80	5	7	0.64	0.65	0.53	0.53

The fenestration tests were conducted in accordance with EN 14501: 2005, ASTM E903-96; Shading Coefficient (SC), Solar Heat Gain Coefficient (SHGC), Solar Transmittance (Ts), Solar Reflectance (Rs), Solar Absorptance (As), Visible Light Transmittance (Tv); 1/4" (6 mm) Clear Glass (CL); 4 mm clear Glass, Single Glazing (CL-S); Double Glazing 4mm/16mm/4mm with low E-coating in position 3, space filled with Argon (DG). The above data is indicative.

