

# Lafayette Interior Fashions

Contract Department

[www.lafvb.com/lifcontract](http://www.lafvb.com/lifcontract)

765-464-2500 ♦ [quotes@lafvb.com](mailto:quotes@lafvb.com)

# No-Lite Fiberglass genesis® window shades



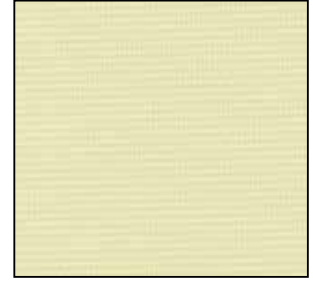
No-Lite Fiberglass Solid  
White 011



No-Lite Fiberglass Solid  
Warm White 020



No-Lite Fiberglass Solid  
Bone 120



No-Lite Fiberglass Solid  
Ivory 420



No-Lite Fiberglass Solid  
Oyster 003



No-Lite Fiberglass Solid  
Champagne 170



No-Lite Fiberglass Duplex  
Cameo 047



No-Lite Fiberglass Duplex  
Coffee 217



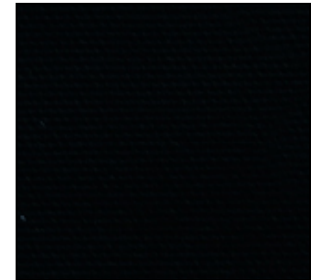
No-Lite Fiberglass Solid  
Cloud 904



No-Lite Fiberglass Duplex  
Cloud Gray 043



No-Lite Fiberglass Duplex  
Pewter 083



No-Lite Fiberglass Duplex  
Black 090

Solid colors show the same color on both inside and outside of window.  
Duplex colors show the color to the room side and white to the outside.

## No-Lite Fiberglass

Fabric Width: 72"

Railroading Available

Opacity: Opaque; Blocks 99% of light

Composition: 100% Fiberglass

Weight: 13.5 oz/sq yd

Fabric Thickness: 12.8 mm

NFPA 701 (Small Scale-1996)

CA Title #19, Section 12371.1

Federal Test Method Standard 191, Method 5903

Federal Flame Resistant Spec CCC-C-521E, Type II Fiberglass and Flame Resistant Test

GREENGUARD Indoor Air Quality Certified

Lifetime Limited Warranty

NFPA 701 FR test results are located in the  
Materials Library at [www.lafvb.com](http://www.lafvb.com)

Select Product Type: Shades

Select Product Name: Genesis Shades



Contract Department  
[www.lafvb.com/lifcontract](http://www.lafvb.com/lifcontract)

