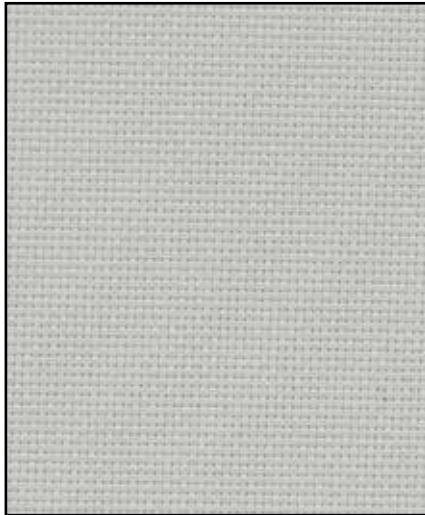


SheerWeave 2390  
5% openness

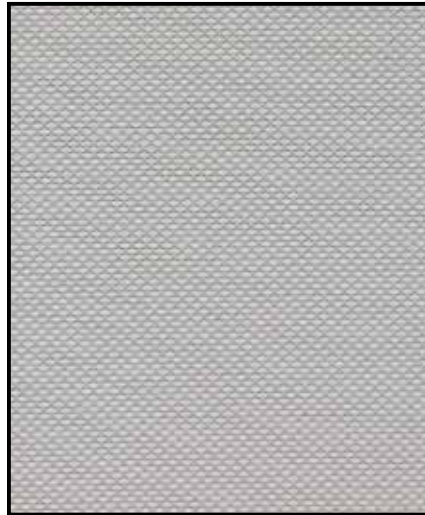
SheerWeave 2410  
3% openness

SheerWeave 2500  
1% openness

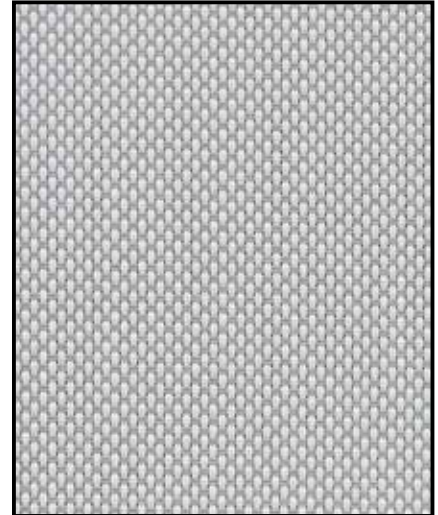
All colors are available in 1%, 3% and 5% openness



Pearl 605



Sand 725



Silver 780



Gray 385



Bronze 122



Charcoal 185

NFPA 701 FR test results are located in the Materials Library at [www.lafvb.com](http://www.lafvb.com)  
Select Product Type: Shades - Select Product Name: Genesis Shades

Other non-stocked colors may be available. Contact our Contract Department.



## Shade Fabric Specifications

Styles 2390, 2410 and 2500 are full basketweaves designed expressly for those applications which require a more opaque and non directional fabric. Style 2390/2410/2500 can also be used in exterior roller shades.

**Fire Classification:** California US Title 19 (small scale), NFPA 701-2004 TM#1 (small scale), NFPA 101 (Class A Rating), CAN/CGSB2-4/162-M80, BS 5867 2008 Part 2 Type B Performance, NFPA 701 TM#2 (large scale), and CAN/ULC-S109-03 (large and small scale).

**Bacterial and Fungal Resistance:** ASTM E 2180, ASTM E84(CI95S1), AATCC30 Part 3, ASTM G21, ASTM D 3273, GREENGUARD Mold and Bacteria Standard ASTM 6329; includes Microban antimicrobial additives.

**Environmental Certification:** Certified to GREENGUARD and GREENGUARD Gold standards for low chemical emissions into indoor air.

**Lead Free:** RoHS/Directive 2002/95/EC, US Consumer Product Safety Commission Section 101, ANSI/WCMA A 100.1-2007 for lead content, and REACH (EC 1907/2006) compliant

**Standard Uses:** Roller Shades, Panel Track

**Shade Warranty:** Limited Lifetime Warranty



### SheerWeave 2390

Fabric Width: 126"

Railroading Available

Composition: 35% Fiberglass, 65% Vinyl on Fiberglass

Mesh Weight: 11.8 oz/sq yd.

Fabric Thickness: .017 in

Openness Factor: Approximately 5%

UV Blockage: Approximately 95%

#### Solar heat control properties of SheerWeave 2390 Fabric installed internally, zero-degrees profile angle

	Solar Optical Properties				Shading Coefficient					
	Ts	Rs	As	Tv	1/8CL	1/4CL	1/4HA	1/2CL	1CL	1HA
605 Pearl	21	61	18	14	0.38	0.38	0.34	0.36	0.35	0.27
725 Sand	17	54	29	12	0.42	0.41	0.36	0.39	0.38	0.29
780 Silver	14	45	41	10	0.48	0.46	0.39	0.45	0.43	0.32
185 Charcoal	4	4	92	5	0.73	0.69	0.51	0.69	0.63	0.43
385 Gray	5	9	86	6	0.70	0.67	0.49	0.66	0.60	0.41
122 Bronze	6	6	88	6	0.73	0.69	0.50	0.68	0.62	0.42

### SheerWeave 2410

Fabric Width: 126"

Railroading Available

Composition: 35% Fiberglass, 65% Vinyl on Fiberglass

Mesh Weight: 14.1 oz/sq yd.

Fabric Thickness: .019 in

Openness Factor: Approximately 3%

UV Blockage: Approximately 97%

#### Solar heat control properties of SheerWeave 2410 Fabric installed internally, zero-degrees profile angle

	Solar Optical Properties				Shading Coefficient					
	Ts	Rs	As	Tv	1/8CL	1/4CL	1/4HA	1/2CL	1CL	1HA
605 Pearl	17	64	19	12	0.35	0.35	0.33	0.33	0.33	0.26
725 Sand	11	55	34	8	0.40	0.39	0.35	0.38	0.37	0.28
780 Silver	9	44	47	7	0.47	0.46	0.38	0.44	0.43	0.31
185 Charcoal	3	3	94	3	0.74	0.70	0.51	0.69	0.63	0.43
385 Gray	3	9	88	3	0.70	0.66	0.49	0.65	0.60	0.41
122 Bronze	3	6	91	3	0.72	0.68	0.50	0.67	0.62	0.42

### SheerWeave 2500

Fabric Width: 126"

Railroading Available

Composition: 37% Fiberglass, 63% Vinyl on Fiberglass

Mesh Weight: 16.25 oz/sq yd.

Fabric Thickness: .024 in

Openness Factor: Approximately 1%

UV Blockage: Approximately 99%

#### Solar heat control properties of SheerWeave 2500 Fabric installed internally, zero-degrees profile angle

	Solar Optical Properties				Shading Coefficient					
	Ts	Rs	As	Tv	1/8CL	1/4CL	1/4HA	1/2CL	1CL	1HA
605 Pearl	15	68	17	13	0.31	0.32	0.31	0.30	0.30	0.26
725 Sand	10	60	30	9	0.36	0.36	0.33	0.34	0.34	0.27
780 Silver	7	50	43	6	0.43	0.42	0.36	0.40	0.39	0.29
185 Charcoal	1	4	95	1	0.73	0.69	0.50	0.69	0.62	0.42
385 Gray	2	8	90	3	0.70	0.67	0.49	0.67	0.60	0.41
122 Bronze	1	6	93	1	0.71	0.68	0.50	0.68	0.61	0.42

TS = Solar Transmittance  
 RS = Solar Reflectance  
 AS = Solar Absorptance  
 TV = Visual Transmittance  
 1/8 CL = 1/8" Clear Glass  
 1/4 CL = 1/4" Clear Glass  
 1/4HA = 1/4" Heat Absorbing Glass  
 1/2 CL = 1/2" Clear Glass  
 1 CL = 1" Clear Glass  
 1 HA = 1" Heat Absorbing Glass

The solar optical properties are used to calculate the shading coefficient. The shading coefficient represents the percentage of solar heat gain that is transmitted to the interior through the glass and shade. Darker colors provide maximum glare reduction and visibility.

