



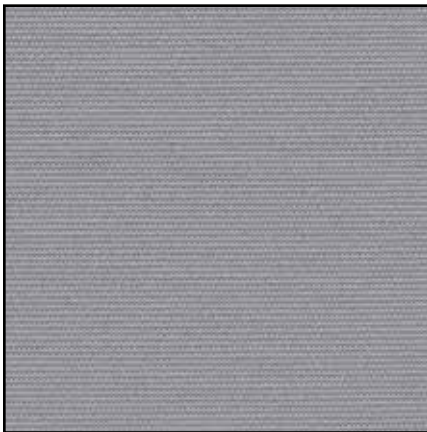
White 885



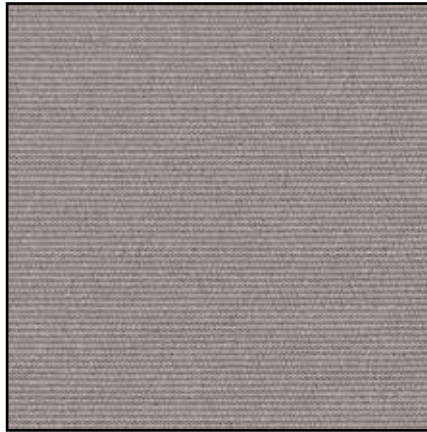
Birch Bark 141



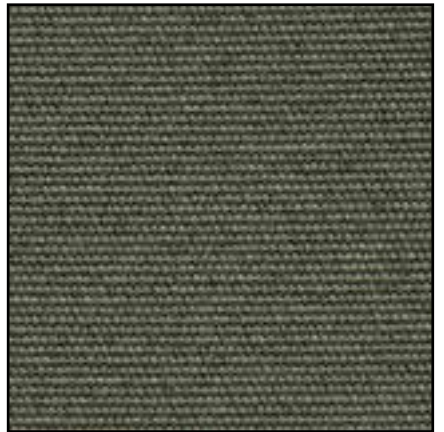
Sand 725



Canyon 162



Mushroom 535



Graphite 983

NFPA 701 FR test results are located
in the Materials Library at www.lafvb.com
Select Product Type: Shades
Select Product Name: Genesis Shades

Other non-stocked colors may be available.
Contact our Contract Department.



Onyx 562



Shade Fabric Specifications

SheerWeave 7000 is uniquely designed to provide total light blockage when complete room darkening is needed. With a broad range of decorator colors, the look and feel of rich cloth and a PVC-free composition, SheerWeave 7000 will enhance the beauty and function of both commercial and residential spaces.

Fire Classification: California US Title 19 (small scale), NFPA 701-2004 TM#1 (small scale), BS 5867 2008 Part 2 Type B Performance, CAN/ULC-S109-03 (large and small scale), ASTM E84 (Class 1) and CAN/CGSB2-4/162-M80

Bacterial and Fungal Resistance: ASTM G21-96, AATCC174-1998 Part II and III

Environmental Certification: Certified to GREENGUARD and GREENGUARD Gold standards for low chemical emissions into indoor air during product usage.

Lead Free: RoHS/Directive 2002/95/EC, US Consumer Product Safety Commission Section 101, ANSI/WCMA A 100.1-2007 for lead content

Standard Uses: Roller Shades, Panel Track

Shade Warranty: Limited Lifetime Warranty



SheerWeave 7000 Blackout

Fabric Width: 118"

Railroading Available

Opacity: Opaque; Blocks 99% of light

Composition: 100% Polyester with Acrylic Foamed Backing

Mesh Weight: 13.41 oz/sq yd.

Fabric Thickness: .026 in

Solar heat control properties of SheerWeave 7000
 Fabric installed internally, zero-degrees profile angle

	Solar Optical Properties				SHGC/G VALUE G-TOT (GLASS & BLIND) Single			Insulating	
	Ts	Rs	As	Tv	1/8CL	1/4CL	1/4HA	1CL	1HA
885 White	0	64	36	0	0.31	0.31	0.30	0.30	0.24
725 Sand	0	64	36	0	0.27	0.27	0.26	0.26	0.21
141 Birch	0	64	36	0	0.27	0.27	0.26	0.26	0.21
535 Mushroom	0	64	36	0	0.27	0.27	0.26	0.26	0.21
162 Canyon	0	64	36	0	0.27	0.27	0.26	0.26	0.21
983 Graphite	0	64	36	0	0.27	0.27	0.26	0.26	0.21
562 Onyx	0	64	36	0	0.31	0.31	0.30	0.30	0.24

TS = Solar Transmittance

RS = Solar Reflectance

AS = Solar Absorptance

TV = Visual Transmittance

SHGC = Solar Heat Gain Coefficient

1/8 CL = 1/8" Clear Glass

1/4 CL = 1/4" Clear Glass

1/4HA = 1/4" Heat Absorbing Glass

1/2 CL = 1/2" Clear Glass

1 CL = 1" Clear Glass

1 HA = 1" Heat Absorbing Glass

Solar Heat Gain Coefficient (SHGC) shown calculated according to Office of Building Technology, State and Community Programs, Energy Efficiency and Renewable Energy, U.S. Department of Energy's definition of SHGC. SHGC represents the percentage of solar heat gain that is transmitted to the interior through the glass and shading system. If you are using glass whose performance is listed in terms of SC, you may convert to SHGC by multiplying the SC by 0.87.

