

Roller Shades

genesis® Window Shades

Office Application



The Genesis fabric collection features Performance Screens, Designer Screens and Solar Screens, ranging from 1% to 25% openness. Most screen fabrics have an FR rating (NFPA 701 or CA Title 19) and an eco-friendly certification (Greenguard or Oeko-tex 100). Many also have anti-microbial specifications. The ability to use the Genesis fabric as a single roller shade, dual roller shade or Panel Track shade offers versatility in any commercial or educational institution setting.

Genesis Roller Shades feature an SL Clutch and metal hem bar standard; both color coordinated to the shade material. Other options include: Small or Large Cassette, Fascia systems, Light Blockout system and several metal bead chain colors.

Operating the roller shade using a continuous loop bead chain is easy. A Cord Tension Lock is installed on the operating side of the clutch operated shade to secure the cord and keep the continuous loop tight.

Healthcare Dual Shade Application



Restaurant Application



Roller Shades

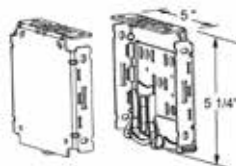
genesis® Window Shades

Manual Roller Shade



- SL Series clutch operation
- Outside mount shade with color coordinated bracket cover
- Color coordinated beaded loop chain
- Optional fabric covered cassette
- Optional 3", 4" or 5" Fascia
- Fabric comes off the back of the roller
- Metal hem bar for additional weight and stability
- Optional metal bead chain in Black, Antique Bronze or Stainless Steel

Dual Roller Shade with 5" Fascia



- Available on all Genesis fabrics
- 5" Flat Fascia available in Bronze, White or Brushed Nickel
- 5" Pocket Fascia available in Anodized or White
- SL Series clutches on both shades
- Bracket end plate supports two shades
- Shades operate independently

Dimensional Guidelines

Manual Roller Shades

- Maximum Width: 94" to 126" - Varies by material; Some fabrics can be railroaded (turned length for width)
- Maximum Length: 120"; Longer length on some fabrics if larger tube sizes are used

SL Series Clutch Colors: Black, White, Vanilla

R Series Clutch Colors: Black, Vanilla

Metal Hem Bar Colors:

Black, Bronze, Brushed Nickel, Desert Tan, White, Vanilla

Small and Large Cassette Colors:

Black, Bronze, Brushed Nickel, Desert Tan, White, Vanilla

3" and 4" Fascia Colors:

Black, Bronze, Brushed Nickel, White, Vanilla

5" Flat Fascia Colors: Bronze, Brushed Nickel, White

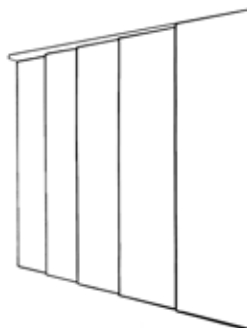
5" Pocket Fascia Colors: Anodized, White

Motorization: Auto-Wand™ and EZ Charge™ Battery; Somfy, QMotion

Panel Track

- Maximum Width: 192"
- Maximum Length: 144" Cord Draw; 96" Wand Control
- Track colors: Brown or White

Panel Track



- Available on 69 Genesis patterns
- Cord draw or wand control
- One way or split draw design
- Powder coated track; white, brown
- Panel attachment with velcro
- Approximate 3" overlap from panel to panel

Fabric Choices

Total Genesis Collection - 349 skus

Screen Shade Selection - 145 skus

Performance Screens

Designer Screens

Solar Screens with multiple degrees of openness

Openness ranges from 1% to 25%

FR rating on 214 skus in collection

Eco-Friendly rating on 292 skus in collection

Unique E Screen with KOOLBLACK™ Technology and

T Screen with KOOLBLACK™ Technology fabrics

Technical certificates located on web site in secured Dealer Center



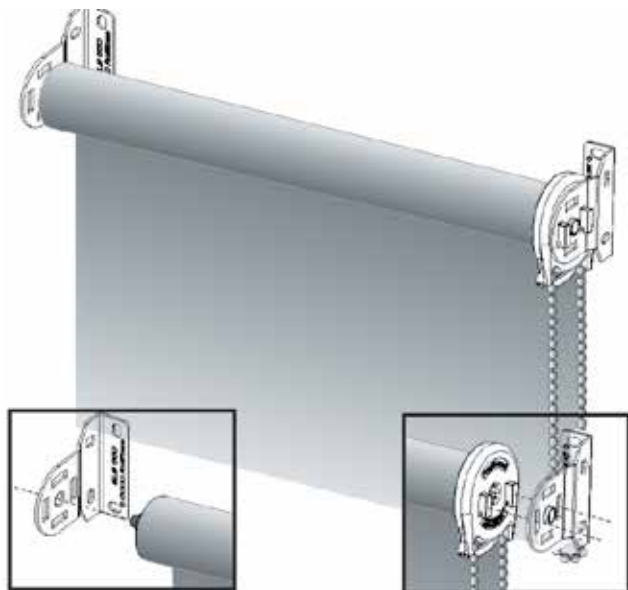
LAFAYETTE
interior fashions™

10/2017

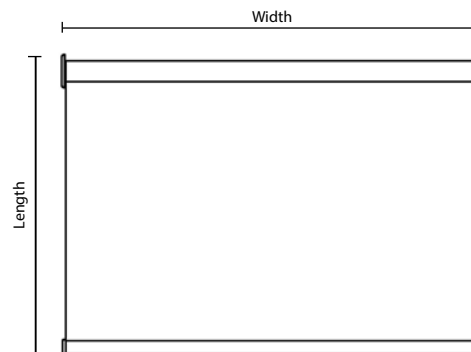
Contract Department
www.lafvb.com/lifcontract
765-464-2500 / quotes@lafvb.com



SL Clutch System

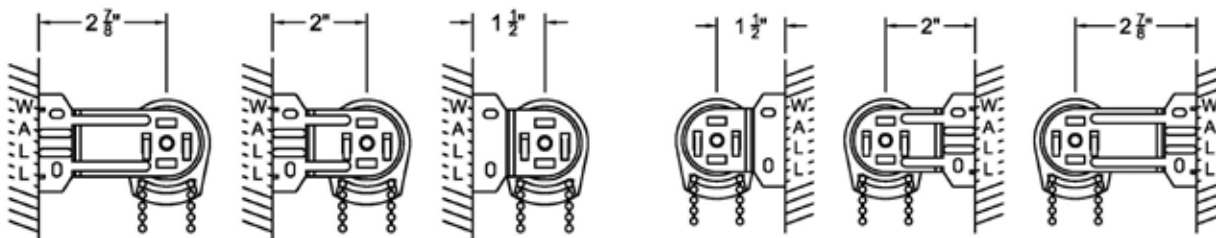


2 Dimensional

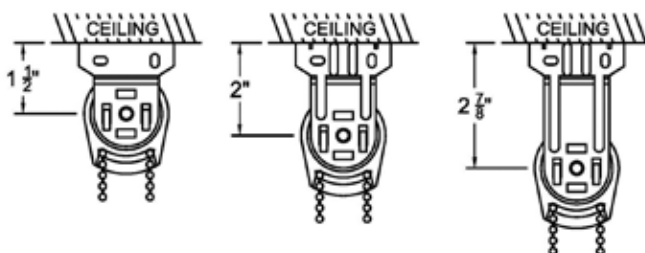


SL Clutch Brackets & Mounting Options

Wall Mount



Ceiling Mount



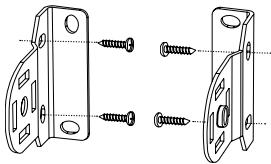
Bead Chain Lengths

Shade Length	Drop	Shade Length	Drop
Up to 30"	1 ft.	66 1/16" - 78"	5 ft.
30 1/16" - 42"	2 ft.	78 1/16" - 90"	6 ft.
42 1/16" - 54"	3 ft.	90 1/16" - 102"	7 ft.
54 1/16" - 66"	4 ft.	Over 102"	8 ft.

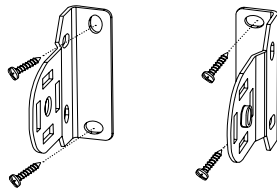


Installation Options

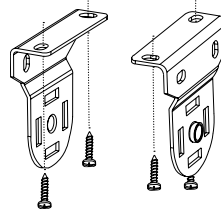
To the inside of
the window frame



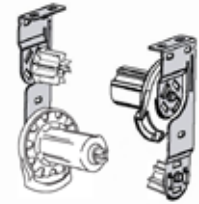
To the wall or front
of the window molding



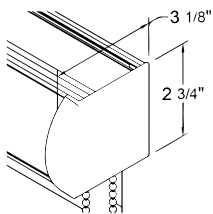
To the ceiling or top of
the window frame



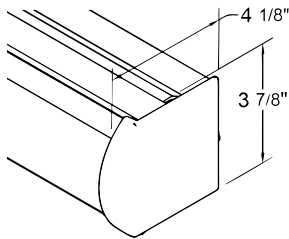
Dual Shade Bracket:
To the ceiling or top of
the window frame



Cassette Systems

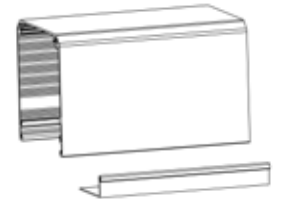
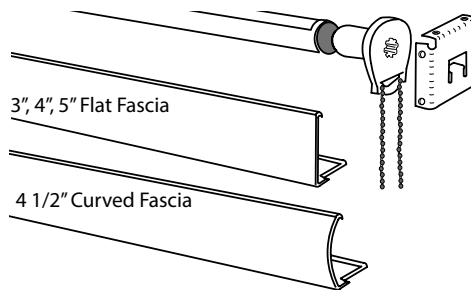


Small Cassette



Large Cassette

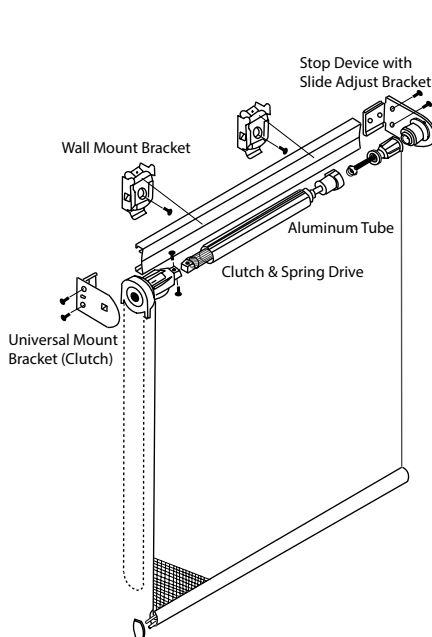
Fascia Systems



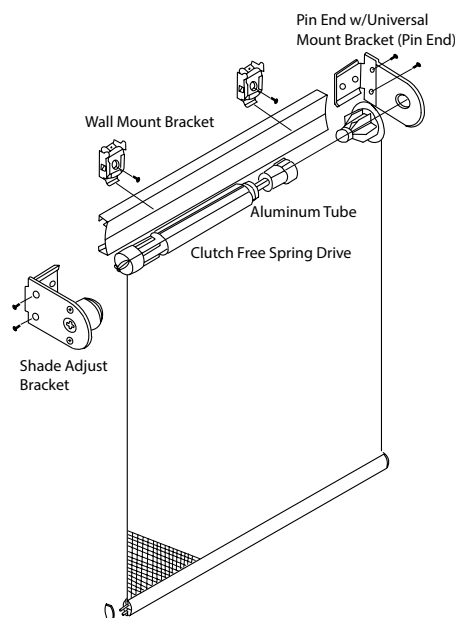
5" Pocket Fascia - 5 5/16" high;
2 5/8" wide Bottom Gravity Lip

3" Flat Fascia, 2 1/4" deep Bottom Edge
4" Flat Fascia, 2 3/4" deep Bottom Edge
4" Curved Fascia, 3 1/2" deep Bottom Edge
5" Flat Fascia, 3 13/16" deep Bottom Edge

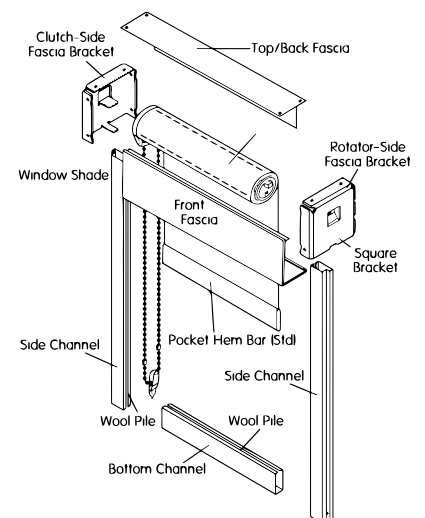
EZ Pull System



EZ Lift System



Light Blockout System



Motorization is available. See Motorization Overview.

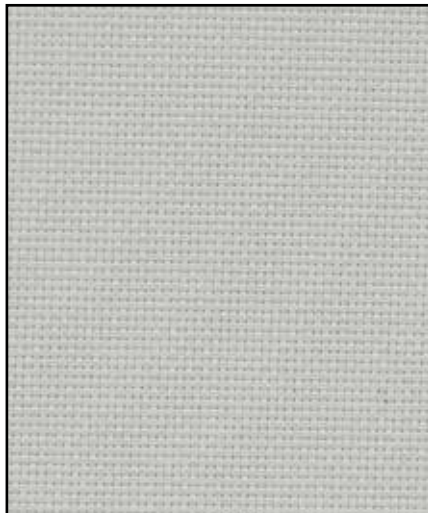


SheerWeave 2390
5% openness

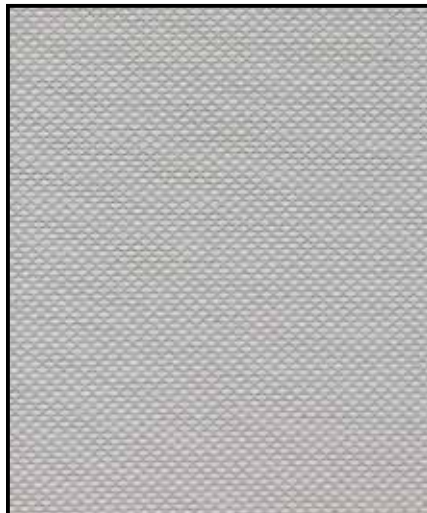
SheerWeave 2410
3% openness

SheerWeave 2500
1% openness

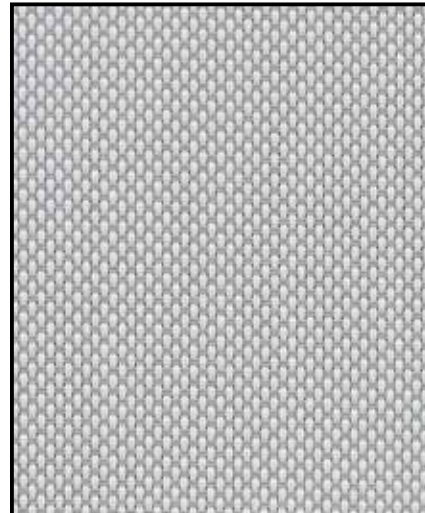
All colors are available in 1%, 3% and 5% openness



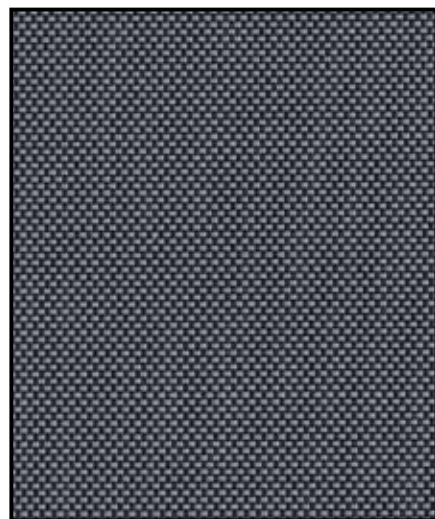
Pearl 605



Sand 725



Silver 780



Gray 385



Bronze 122



Charcoal 185

NFPA 701 FR test results are located in the Materials Library at www.lafvb.com
Select Product Type: Shades - Select Product Name: Genesis Shades

Other non-stocked colors may be available. Contact our Contract Department.



Shade Fabric Specifications

Styles 2390, 2410 and 2500 are full basketweaves designed expressly for those applications which require a more opaque and non directional fabric. Style 2390/2410/2500 can also be used in exterior roller shades.

Fire Classification: California US Title 19 (small scale), NFPA 701-2004 TM#1 (small scale), NFPA 101 (Class A Rating), CAN/CGSB2-4/162-M80, BS 5867 2008 Part 2 Type B Performance, NFPA 701 TM#2 (large scale), and CAN/ULC-S109-03 (large and small scale).

Bacterial and Fungal Resistance: ASTM E 2180, ASTM E84(CI95S1), AATCC30 Part 3, ASTM G21, ASTM D 3273, GREENGUARD Mold and Bacteria Standard ASTM 6329; includes Microban antimicrobial additives.

Environmental Certification: Certified to GREENGUARD and GREENGUARD Gold standards for low chemical emissions into indoor air.

Lead Free: RoHS/Directive 2002/95/EC, US Consumer Product Safety Commission Section 101, ANSI/WCMA A 100.1-2007 for lead content, and REACH (EC 1907/2006) compliant

Standard Uses: Roller Shades, Panel Track

Shade Warranty: Limited Lifetime Warranty



SheerWeave 2390

Fabric Width: 126"

Railroading Available

Composition: 35% Fiberglass, 65% Vinyl on Fiberglass

Mesh Weight: 11.8 oz/sq yd.

Fabric Thickness: .017 in

Openness Factor: Approximately 5%

UV Blockage: Approximately 95%

Solar heat control properties of SheerWeave 2390 Fabric installed internally, zero-degrees profile angle

	Solar Optical Properties				Shading Coefficient					
	Ts	Rs	As	Tv	Single	Single	Single	Single	Single	Single
605 Pearl	21	61	18	14	0.38	0.38	0.34	0.36	0.35	0.27
725 Sand	17	54	29	12	0.42	0.41	0.36	0.39	0.38	0.29
780 Silver	14	45	41	10	0.48	0.46	0.39	0.45	0.43	0.32
185 Charcoal	4	4	92	5	0.73	0.69	0.51	0.69	0.63	0.43
385 Gray	5	9	86	6	0.70	0.67	0.49	0.66	0.60	0.41
122 Bronze	6	6	88	6	0.73	0.69	0.50	0.68	0.62	0.42

SheerWeave 2410

Fabric Width: 126"

Railroading Available

Composition: 35% Fiberglass, 65% Vinyl on Fiberglass

Mesh Weight: 14.1 oz/sq yd.

Fabric Thickness: .019 in

Openness Factor: Approximately 3%

UV Blockage: Approximately 97%

Solar heat control properties of SheerWeave 2410 Fabric installed internally, zero-degrees profile angle

	Solar Optical Properties				Shading Coefficient					
	Ts	Rs	As	Tv	Single	Single	Single	Single	Single	Single
605 Pearl	17	64	19	12	0.35	0.35	0.33	0.33	0.33	0.26
725 Sand	11	55	34	8	0.40	0.39	0.35	0.38	0.37	0.28
780 Silver	9	44	47	7	0.47	0.46	0.38	0.44	0.43	0.31
185 Charcoal	3	3	94	3	0.74	0.70	0.51	0.69	0.63	0.43
385 Gray	3	9	88	3	0.70	0.66	0.49	0.65	0.60	0.41
122 Bronze	3	6	91	3	0.72	0.68	0.50	0.67	0.62	0.42

SheerWeave 2500

Fabric Width: 126"

Railroading Available

Composition: 37% Fiberglass, 63% Vinyl on Fiberglass

Mesh Weight: 16.25 oz/sq yd.

Fabric Thickness: .024 in

Openness Factor: Approximately 1%

UV Blockage: Approximately 99%

Solar heat control properties of SheerWeave 2500 Fabric installed internally, zero-degrees profile angle

	Solar Optical Properties				Shading Coefficient					
	Ts	Rs	As	Tv	Single	Single	Single	Single	Single	Single
605 Pearl	15	68	17	13	0.31	0.32	0.31	0.30	0.30	0.26
725 Sand	10	60	30	9	0.36	0.36	0.33	0.34	0.34	0.27
780 Silver	7	50	43	6	0.43	0.42	0.36	0.40	0.39	0.29
185 Charcoal	1	4	95	1	0.73	0.69	0.50	0.69	0.62	0.42
385 Gray	2	8	90	3	0.70	0.67	0.49	0.67	0.60	0.41
122 Bronze	1	6	93	1	0.71	0.68	0.50	0.68	0.61	0.42

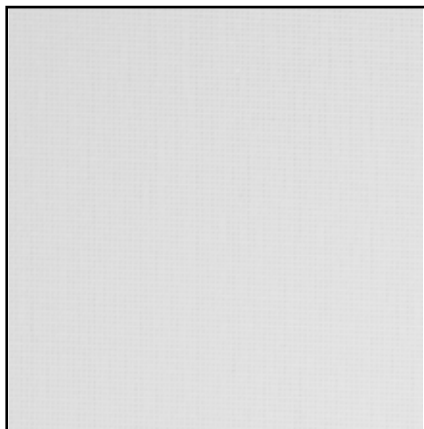
TS = Solar Transmittance
RS = Solar Reflectance
AS = Solar Absorptance
TV = Visual Transmittance
1/8 CL = 1/8" Clear Glass

1/4 CL = 1/4" Clear Glass
1/4HA = 1/4" Heat Absorbing Glass
1/2 CL = 1/2" Clear Glass
1 CL = 1" Clear Glass
1 HA = 1" Heat Absorbing Glass

The solar optical properties are used to calculate the shading coefficient. The shading coefficient represents the percentage of solar heat gain that is transmitted to the interior through the glass and shade. Darker colors provide maximum glare reduction and visibility.



All colors are available in both 3% and 5% openness



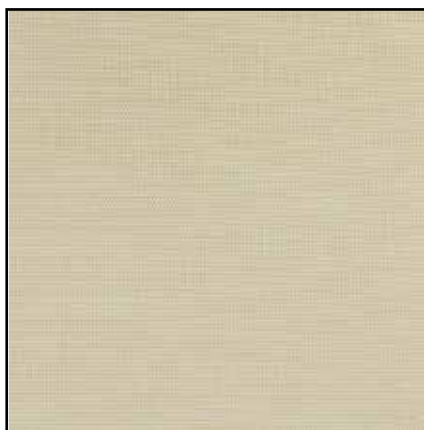
White 885



Linen 455



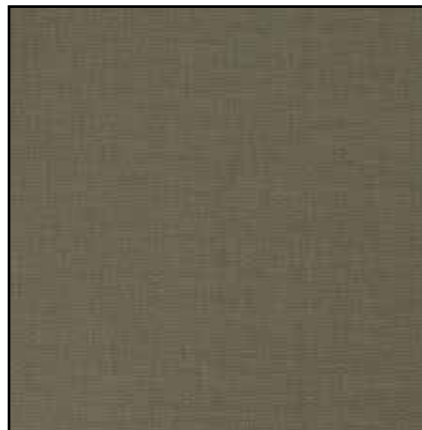
Stone 820



Pebble 610



Cappuccino 148



Sable 714

NFPA 701 FR test results are located
in the Materials Library at www.lafvb.com
Select Product Type: Shades
Select Product Name: Genesis Shades

Other non-stocked colors may be available.
Contact our Contract Department.



Cocoa 208



Charcoal 185



LAFAYETTE
interior fashions™

Contract Department
www.lafvb.com/lifcontract



Shade Fabric Specifications

Fire Classification: NFPA 701-10 TM#1, California US Title 19, CAN/ULC-S109-03 (Small Flame Test),

Bacterial and Fungal Resistance: ASTM E2180 and ASTM G21

Environmental Certification: Certified to GREENGUARD and GREENGUARD Gold standards for low chemical emissions into indoor air during product usage.

Lead Free: RoHS - Lead Free

Standard Uses: Roller Shades, Panel Track

Warranty: Limited Lifetime Warranty

Care and Cleaning: Remove dust with vacuum cleaner or compressed air.

Do not scrub. Do not use solvents or any abrasive substance which might damage the coating of the fabric. Clean with a sponge or a soft brush dipped in soapy water using mild detergent. Rinse with clean water. Leave the shade down until completely dry. You can also very gently rub the fabric with a clean white pencil eraser to remove small stains.



M Screen (Dimensions)

Fabric Width: 120"

Not Available Railroaded

Composition: 36% Fiberglass, 64% PVC

Weight - 3% Openness: 12.7 oz/sq yd. ± 5%

Weight - 5% Openness: 11.3 oz/sq yd. ± 5%

Fabric Thickness: .022 in ± 5%

UV Blockage: 97% for 3% M Screen

UV Blockage: 95% for 5% M Screen

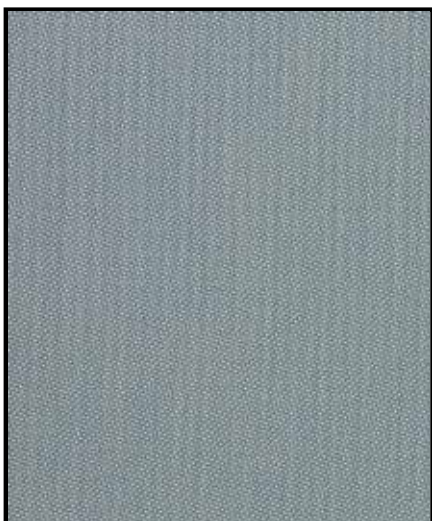
Fenestration Properties for M Screen 3% and 5%

	Ts		Rs		As		SHGC/G Value		CL-S		DG	
	3%	5%	3%	5%	3%	5%	3%	5%	3%	5%	3%	5%
885 White	18	19	71	71	11	10	16	16	0.32	0.32	0.34	0.34
455 Linen	15	19	64	61	21	20	11	15	0.36	0.38	0.36	0.37
820 Stone	21	21	62	61	17	18	18	18	0.38	0.38	0.37	0.37
610 Pebble	21	22	51	50	28	28	16	18	0.44	0.45	0.41	0.41
714 Sable	4	6	12	13	84	81	4	5	0.65	0.64	0.53	0.53
185 Charcoal	3	3	4	4	93	93	3	3	0.69	0.69	0.55	0.55
208 Cocoa	3	5	5	5	92	90	3	4	0.69	0.69	0.55	0.55
148 Cappuccino	5	7	13	13	82	80	5	7	0.64	0.65	0.53	0.53

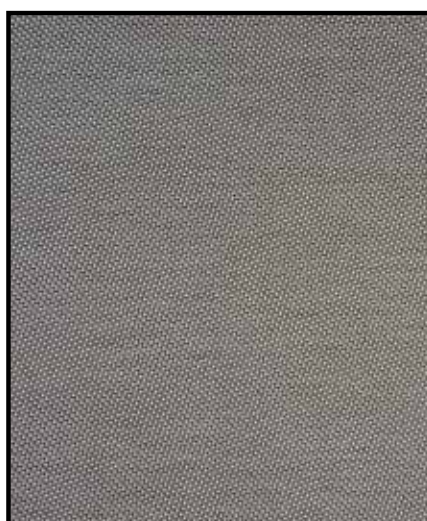
The fenestration tests were conducted in accordance with EN 14501: 2005, ASTM E903-96; Shading Coefficient (SC), Solar Heat Gain Coefficient (SHGC), Solar Transmittance (Ts), Solar Reflectance (Rs), Solar Absorptance (As), Visible Light Transmittance (Tv); 1/4" (6 mm) Clear Glass (CL); 4 mm clear Glass, Single Glazing (CL-S); Double Glazing 4mm/16mm/4mm with low E-coating in position 3, space filled with Argon (DG). The above data is indicative.



All colors are available in both 3% and 5% openness



White/Grey 385



White/Cocoa 208



White/Charcoal 185

Other non-stocked colors may be available. Contact our Contract Department.

NFPA 701 FR test results are located in the Materials Library at www.lafvb.com

Select Product Type: Shades

Select Product Name: Genesis Shades



About KOOLBLACK™ Technology

KOOLBLACK™ Technology is a patented technology that enhances dark colored yarn's energy reflectively by increasing its near infrared reflection (NIR).

While conventional dark screen fabric provides superior view through and exceptional glare control, it absorbs the energy that is created by near infrared wavelength. A dark screen fabric with KOOLBLACK™ Technology enables the fabric to reflect more solar heat, therefore, absorb less energy. As a result, KOOLBLACK™ Technology increases the energy efficiency of dark solar shade fabrics to levels comparable with light colors!

Only dark solar shade fabrics with KOOLBLACK™ Technology provide exceptional glare control, comfortable view through and elegant streetside aesthetics while reducing heat.



T Screen with KOOLBLACK™ Technology

Fabric Width: 122"

Not Available Railroaded

Composition: 36% Fiberglass, 64% Vinyl

Weight: 3% - 13.27 oz/sq yd. ±5%

Weight: 5% - 12.48 oz/sq yd. ±5%

Fabric Thickness: 3% - .029" ±5%

Fabric Thickness: 5% - .027" ±5%

Openness Factor: 3% - Approximately 3%

Openness Factor: 5% - Approximately 5%

UV Blockage: 3% - Approximately 97%

UV Blockage: 5% - Approximately 95%

Fenestration Properties for T Screen with KOOLBLACK™ Technology							
	Side	Rs		Tv		G Value DG	
		3%	5%	3%	5%	3%	5%
385 White / Grey	Dark	50	47	10	11	0.41	0.42
	Light	65	60	8	10	0.36	0.38
208 White / Cocoa	Dark	45	41	8	10	0.42	0.44
	Light	63	57	7	10	0.37	0.39
185 White / Charcoal Gray	Dark	43	39	8	10	0.43	0.44
	Light	63	57	7	9	0.37	0.39

The fenestration tests were conducted in accordance with EN 14501: 2005, ASTM E903-96; G-Value (Solar Heat Gain Coefficient) Solar Reflectance (Rs), Visible Light Transmittance (Tv); Double Glazing 4mm/16mm/4mm with low E-coating in position 3, space filled with Argon (DG). The above data is indicative.

Shade Fabric Specifications

Fire Classification: NFPA 701-2004 TM#1, California U.S. Title 19

Bacterial and Fungal Resistance: ASTM G21, ASTM E2180

Environmental Benefits: RoHS-Lead Free

Standard Uses: Roller Shades, Panel Track

Warranty: Limited Lifetime Warranty

Care and Cleaning: Remove dust with vacuum cleaner or compressed air.

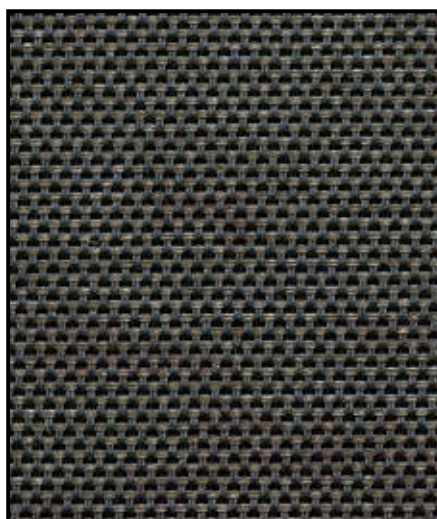
Do not scrub. Do not use solvents or any abrasive substance which might damage the coating of the fabric. Clean with a sponge or a soft brush dipped in soapy water using mild detergent. Rinse with clean water. Leave the shade down until completely dry. You can also very gently rub the fabric with a clean white pencil eraser to remove small stains.



All colors are available in both 3% and 5% openness



Charcoal / Apricot 040



Charcoal / Cocoa 208



Charcoal / Charcoal 185

Other non-stocked colors may be available. Contact our Contract Department.

NFPA 701 FR test results are located in the Materials Library at www.lafvb.com

Select Product Type: Shades

Select Product Name: Genesis Shades



About KOOLBLACK™ Technology

KOOLBLACK™ Technology is a patented technology that enhances dark colored yarn's energy reflectively by increasing its near infrared reflection (NIR).

While conventional dark screen fabric provides superior view through and exceptional glare control, it absorbs the energy that is created by near infrared wavelength. A dark screen fabric with KOOLBLACK™ Technology enables the fabric to reflect more solar heat, therefore, absorb less energy. As a result, KOOLBLACK™ Technology increases the energy efficiency of dark solar shade fabrics to levels comparable with light colors!

Only dark solar shade fabrics with KOOLBLACK™ Technology provide exceptional glare control, comfortable view through and elegant streetside aesthetics while reducing heat.

KOOLBLACK™
TECHNOLOGY

E Screen with KOOLBLACK™ Technology

Fabric Width: 122"

Not Available Railroaded

Composition: 36% Fiberglass, 64% Vinyl

Weight: 3% - 11.3 oz/sq yd. ±5%

Weight: 5% - 10.6 oz/sq yd. ±5%

Fabric Thickness: 3% - .020" ±5%

Fabric Thickness: 5% - .019" ±5%

Openness Factor: 3% - Approximately 3%

Openness Factor: 5% - Approximately 5%

UV Blockage: 3% - Approximately 97%

UV Blockage: 5% - Approximately 95%

Fenestration Properties for E Screen with KOOLBLACK™ Technology

	Rs		Tv		G Value DG	
	3%	5%	3%	5%	3%	5%
185 Charcoal / Charcoal	34	33	6	6	0.46	0.46
208 Charcoal / Cocoa	35	32	6	7	0.46	0.47
040 Charcoal / Apricot	38	37	6	9	0.45	0.45

The fenestration tests were conducted in accordance with EN 14501: 2005, ASTM E903-96; G-Value (Solar Heat Gain Coefficient) Solar Reflectance (Rs), Visible Light Transmittance (Tv); Double Glazing 4mm/16mm/4mm with low E-coating in position 3, space filled with Argon (DG). The above data is indicative.

Shade Fabric Specifications

Fire Classification: NFPA 701-10 TM#1, California U.S. Title 19
CAN/ULC-S109-03 Small Flame Test

Bacterial and Fungal Resistance: ASTM G21, ASTM E2180

Environmental Benefits: RoHS-Lead Free

Standard Uses: Roller Shades

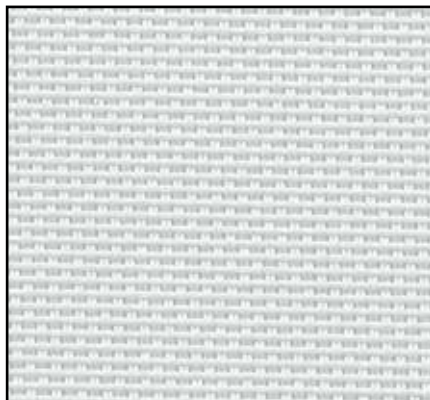
Warranty: Limited Lifetime Warranty

Care and Cleaning: Remove dust with vacuum cleaner or compressed air.

Do not scrub. Do not use solvents or any abrasive substance which might damage the coating of the fabric. Clean with a sponge or a soft brush dipped in soapy water using mild detergent. Rinse with clean water. Leave the shade down until completely dry. You can also very gently rub the fabric with a clean white pencil eraser to remove small stains.



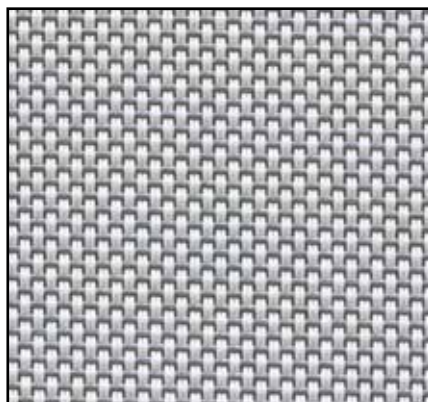
Available 7% openness



Pearl 605



Sand 725



Grey 385

Economy Screen

Fabric Width: 118"
Not Available Railroded
Openness Factor: Approximately 7%
Composition: 70% PVC, 30% Polyester
Weight: 400 g/sq meter ± 5%
Fabric Thickness: 057 mm ± 5%
Colour Fastness Class 4.5 AATCC 16-2003
Tensile Strength: 1464 Warp 1521 Weft
Tearing Strength: 146 Warp 186 Weft
NFPA 701
Oeko-Tex Standard 100
GREENGUARD Indoor Air Quality Certified
Lifetime Limited Warranty



Fenestration Properties for Economy Screen (Contract)

	Ts	Rs	As	Tv	Tuv	O-F	1/8" CL	1/4" CL	1/4" H.A.
605 Pearl	38	36	26	24	9	10	0.45	0.43	0.37
725 Sand	34	16	50	18	8	9	0.52	0.51	0.41
385 Grey	32	6	62	17	8	8	0.75	0.71	0.52

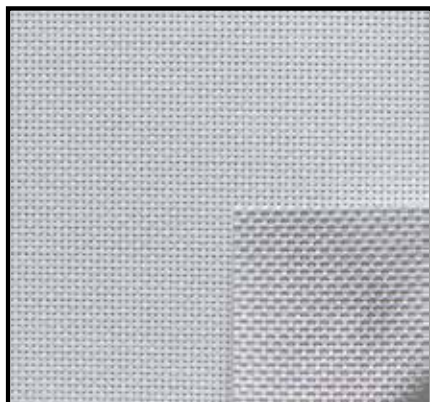
Ts = Solar Transmittance
RS = Solar Reflectance
AS = Solar Absorptance
TV = Visual Transmittance

1/8 CL = 1/8" Clear Glass
1/4 CL = 1/4" Clear Glass
1/4HA = 1/4" Heat Absorbing Glass

NFPA 701 FR test results are located
in the Materials Library at www.lafvb.com
Select Product Type: Shades
Select Product Name: Genesis Shades



Available 4% openness



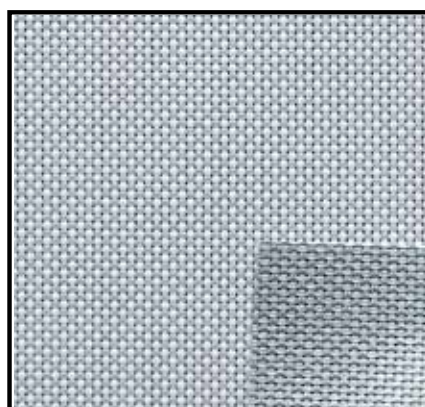
Pearl 605 with Metalized Back



Sand 725 with Metalized Back



Grey 385 with Metalized Back



Silver Sand 098 with Metalized Back

Vista Screen (Toka Metalized)

Fabric Width: 98"

Metalized Back on all colors (bottom right of swatch)

Not Available Railroaded

Openness Factor: Approximately 4%

Composition:

4% vacuum aluminum layer, 28% Polyester, 68% PVC

Weight: 410 gr/sq meter \pm 5%

Fabric Thickness: .53 mm \pm 5%

NFPA 701 (Class A)

Oeko-Tex Standard 100

GREENGUARD Indoor Air Quality Certified

Lifetime Limited Warranty



Fenestration Properties for Vista Screen (Toka Metalized)

	Ts	Rs	As	Tv	Tuv	O-F	1/8" CL	1/4" CL	1/4" H.A.
605 Pearl	11	45	44	14	7	7	0.47	0.46	0.38
725 Sand	9	46	45	15	6	6	0.46	0.45	0.35
098 Silver Sand	9	45	46	13	7	6	0.48	0.46	0.38
385 Grey	6	48	46	14	6	7	0.48	0.46	0.39

TS = Solar Transmittance
RS = Solar Reflectance
AS = Solar Absorptance
TV = Visual Transmittance

1/8 CL = 1/8" Clear Glass
1/4 CL = 1/4" Clear Glass
1/4HA = 1/4" Heat Absorbing Glass

NFPA 701 FR test results are located in the

Materials Library at www.lafvb.com

Select Product Type: Shades

Select Product Name: Genesis Shades



Lafayette Interior Fashions

Contract Department

www.lafvb.com/lifcontract

765-464-2500 ♦ quotes@lafvb.com

Viking (TFR)

genesis® window shades



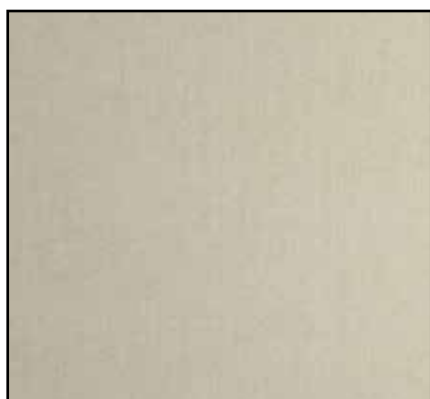
White 011



Cream 080



Ivory 023



Tan 836



Gray 385



Black 008

Viking (TFR)

Fabric Width: 72"

Railroading Available

Opacity: Semi-Opaque; Allows only filtered light inside

Composition: 100% Cotton with Vinyl Coating

Weight: 6.6 oz/sq yd

Fabric Thickness: 10 mm

NFPA 701 (Small Scale-1999)

CA Title #19, Section 12371.1

Federal Test Method Standard 191, Method 5903

GREENGUARD Indoor Air Quality Certified

Limited Lifetime Warranty

NFPA 701 FR test results are located
in the Materials Library at www.lafvb.com

Select Product Type: Shades

Select Product Name: Genesis Shades



LAFAYETTE
interior fashions™

Contract Department
www.lafvb.com/lifcontract



Lafayette Interior Fashions

Contract Department

www.lafvb.com/lifcontract

765-464-2500 • quotes@lafvb.com

No-Lite Fiberglass genesis® window shades



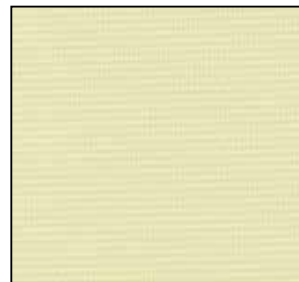
No-Lite Fiberglass Solid
White 011



No-Lite Fiberglass Solid
Warm White 020



No-Lite Fiberglass Solid
Bone 120



No-Lite Fiberglass Solid
Ivory 420



No-Lite Fiberglass Solid
Oyster 003



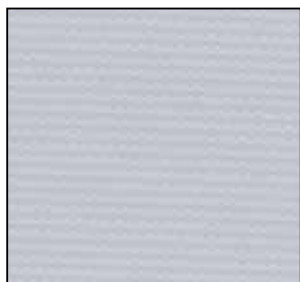
No-Lite Fiberglass Solid
Champagne 170



No-Lite Fiberglass Duplex
Cameo 047



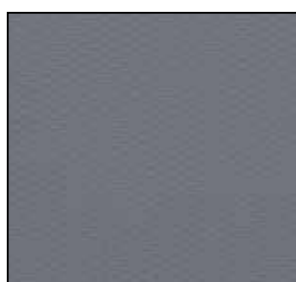
No-Lite Fiberglass Duplex
Coffee 217



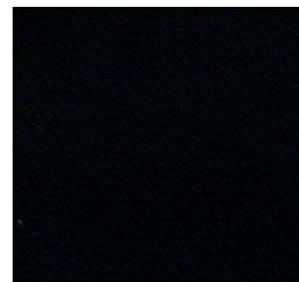
No-Lite Fiberglass Solid
Cloud 904



No-Lite Fiberglass Duplex
Cloud Gray 043



No-Lite Fiberglass Duplex
Pewter 083



No-Lite Fiberglass Duplex
Black 090

Solid colors show the same color on both inside and outside of window.
Duplex colors show the color to the room side and white to the outside.

No-Lite Fiberglass

Fabric Width: 72"

Railroading Available

Opacity: Opaque; Blocks 99% of light

Composition: 100% Fiberglass

Weight: 13.5 oz/sq yd

Fabric Thickness: 12.8 mm

NFPA 701 (Small Scale-1996)

CA Title #19, Section 12371.1

Federal Test Method Standard 191, Method 5903

Federal Flame Resistant Spec CCC-C-521E, Type II Fiberglass and Flame Resistant Test

GREENGUARD Indoor Air Quality Certified

Lifetime Limited Warranty

NFPA 701 FR test results are located in the
Materials Library at www.lafvb.com

Select Product Type: Shades

Select Product Name: Genesis Shades



Contract Department
www.lafvb.com/lifcontract





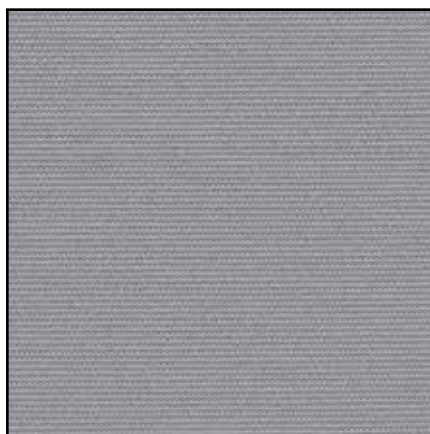
White 885



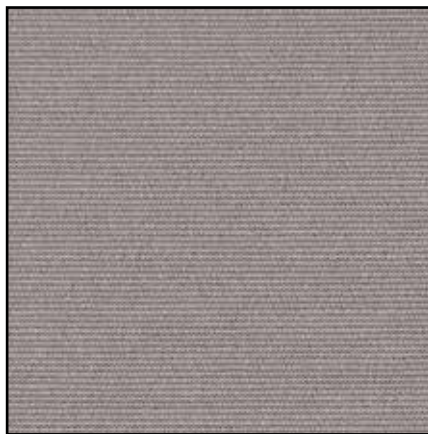
Birch Bark 141



Sand 725



Canyon 162



Mushroom 535



Graphite 983

NFPA 701 FR test results are located
in the Materials Library at www.lafvb.com
Select Product Type: Shades
Select Product Name: Genesis Shades

Other non-stocked colors may be available.
Contact our Contract Department.



Onyx 562



Shade Fabric Specifications

SheerWeave 7000 is uniquely designed to provide total light blockage when complete room darkening is needed. With a broad range of decorator colors, the look and feel of rich cloth and a PVC-free composition, SheerWeave 7000 will enhance the beauty and function of both commercial and residential spaces.

Fire Classification: California US Title 19 (small scale), NFPA 701-2004 TM#1 (small scale), BS 5867 2008 Part 2 Type B Performance, CAN/ULC-S109-03 (large and small scale), ASTM E84 (Class 1) and CAN/CGSB2-4/162-M80

Bacterial and Fungal Resistance: ASTM G21-96, AATCC174-1998 Part II and III

Environmental Certification: Certified to GREENGUARD and GREENGUARD Gold standards for low chemical emissions into indoor air during product usage.

Lead Free: RoHS/Directive 2002/95/EC, US Consumer Product Safety Commission Section 101, ANSI/WCMA A 100.1-2007 for lead content

Standard Uses: Roller Shades, Panel Track

Shade Warranty: Limited Lifetime Warranty



SheerWeave 7000 Blackout

Fabric Width: 118"

Railroading Available

Opacity: Opaque; Blocks 99% of light

Composition: 100% Polyester with Acrylic Foamed Backing

Mesh Weight: 13.41 oz/sq yd.

Fabric Thickness: .026 in

Solar heat control properties of SheerWeave 7000
Fabric installed internally, zero-degrees profile angle

	Solar Optical Properties				SHGC/G VALUE G-TOT Single			GLASS & BLIND Insulating	
	Ts	Rs	As	Tv	1/8CL	1/4CL	1/4HA	1CL	1HA
885 White	0	64	36	0	0.31	0.31	0.30	0.30	0.24
725 Sand	0	64	36	0	0.27	0.27	0.26	0.26	0.21
141 Birch	0	64	36	0	0.27	0.27	0.26	0.26	0.21
535 Mushroom	0	64	36	0	0.27	0.27	0.26	0.26	0.21
162 Canyon	0	64	36	0	0.27	0.27	0.26	0.26	0.21
983 Graphite	0	64	36	0	0.27	0.27	0.26	0.26	0.21
562 Onyx	0	64	36	0	0.31	0.31	0.30	0.30	0.24

TS = Solar Transmittance

RS = Solar Reflectance

AS = Solar Absorptance

TV = Visual Transmittance

SHGC = Solar Heat Gain Coefficient

1/8 CL = 1/8" Clear Glass

1/4 CL = 1/4" Clear Glass

1/4HA = 1/4" Heat Absorbing Glass

1/2 CL = 1/2" Clear Glass

1 CL = 1" Clear Glass

1 HA = 1" Heat Absorbing Glass

Solar Heat Gain Coefficient (SHGC) shown calculated according to Office of Building Technology, State and Community Programs, Energy Efficiency and Renewable Energy, U.S. Department of Energy's definition of SHGC. SHGC represents the percentage of solar heat gain that is transmitted to the interior through the glass and shading system. If you are using glass whose performance is listed in terms of SC, you may convert to SHGC by multiplying the SC by 0.87.



Hardwired Systems

Qmotion Low Voltage Operated

- Extremely quiet operation, industry innovation from Qmotion
- Ability to move shades up and down manually with no remote. Gently pull on the shade bottom to start shade moving
- Convenience of moving the shade up or down, stopping at the top, bottom, three programmable intermediate stops, or anywhere in between
- Side gaps of 1/2" on each side are uniform
- Concealed antenna
- Motor includes 24" wire with male/female quick disconnect
- Universal brackets can be used for IB mount, OB mount, ceiling mount, standard or reverse roll
- Size Standards:
 - Minimum width 17 1/2"
 - Maximum width 118"
 - Maximum length 120"
- Additional Options:
 - Fascia, flat or fabric covered
 - Board mounted fabric wrapped valance
Shade is mounted on board and board is wrapped in shade material; 4 1/2" high; fabric has velcro attachments to the board.
 - Board mounted Majesty Wood Valance
Valance mounted on a board; 4 1/2" high, 5 1/2" returns
 - Power: 24V DC Single shade, Distribution box or Electrical power box
 - Controls: Remotes, Wall Plate, Wall Adapter; Qrelay, Qconnect Qsync

For further motorization information
contact the Lafayette Customer Service
Motorization Department.

Somfy Sonesse® 30 RTS

- 1 1/2" diameter aluminum tube
- Includes a 24V DC Transformer with 15 ft cord
- Motor can be located left or right side of shade
- Motor includes 7 1/2' wire
- Size Standards:
 - Minimum width 20"
 - Maximum width 103"; Some fabric width limitations
 - Maximum height 120"
- Additional Options
 - Small or Large Cassette
 - 3", 4", 5" Fascia
 - Light Blockout system
 - Power: 24V DC Power Supply Distributed Power (Large Applications)

Somfy Sonesse® 40 RTS

- 1 1/2" diameter aluminum tube.
- Includes a 11 1/2' wire w/o a plug, designed to be wired in directly
- Motor can be located on left or right side
- Size Standards:
 - Minimum width: 29"
 - Maximum width: 120"
 - Maximum height: 130"
- Additional Options
 - ST40 STD
 - Large Cassette
 - 4" and 5" Fascia

Somfy Controls available for all Somfy motors

Remotes and Wall Switches; Sun Sensor;
Home Automation, MyLink app

Somfy Sonesse® 50 RTS

- Available on a 2", 2 1/2" and 3" tube
- Includes a 6' wire without a plug designed to be wired-in directly
- Motor can be located on left or right side
- Size Standards:
 - Minimum width using ST50: 36"
 - Minimum width using ILT50: 38"
 - Minimum width using LT50 : 32"
 - Max. width of any roller shade on a 2" tube: 120"
 - Max. width of any roller shade on a 2 1/2" tube: 155"
 - Max. width of any roller shade on a 3" tube: 192"
 - Maximum height of any roller shade: 192"
- Additional Options
 - LT50; ILT50
 - 4" and 5" Fascia
 - Power: Optional cord lengths: 3ft, 6ft, 12 ft, 18ft, 24ft



Battery Operated Systems

Qmotion Battery Operated

- Extremely quiet operation, industry innovation from Qmotion
- Ability to move shades up and down manually with no remote. Gently pull on the shade bottom to start shade moving
- Convenience of moving the shade up or down, stopping at the top, bottom, three programmable intermediate stops, or anywhere in between
- Side gaps of 1/2" on each side are uniform
- Concealed antenna
- Most shades use standard D cell batteries, concealed in tube.
- Shades 15 1/2" to 22 1/2" use 3 AA batteries, concealed in tube.
- Universal brackets can be used for IB mount, OB mount, ceiling mount, standard or reverse roll
- Size Standards:
 - Minimum width 15 1/2"
 - For widths 15 1/2" - 22", maximum length is 96"
 - Maximum width 118"
 - Maximum length 120"
- Additional Options:
 - Fascia, flat or fabric covered
 - Board mounted fabric wrapped valance
Shade is mounted on board and board is wrapped in shade material; 4 1/2" high; fabric has velcro attachments to the board.
 - Board mounted Majesty Wood Valance
Valance mounted on a board;
4 1/2" high, 5 1/2" returns
 - Power: 12V DC Power Supply
 - Controls: Remotes, Wall Plate, Wall Adapter; Qrelay, Qconnect, Qsync

Roll Up WireFree™ RTS (System II)

- Available with Small and Large Cassette
- Available on 1 1/2" aluminum tube
- Includes 12 Volt single reloadable Battery Wand with Lithium batteries and mounting clips
- Size Standards:
 - Minimum width 15"
 - Maximum width 96"
 - Minimum height: 12"
 - Maximum height: 96"
- Additional Options:
 - Power
 - 12V DC Power Supply (Individual)
 - 12V DC Power Supply Distributed Power (Large Applications)
 - Solar Pack
 - Controls: Single and Multi Channel Remotes; Wall Switches
- Exclusions: Season-View

For further motorization information contact the Lafayette Customer Service Motorization Department.

