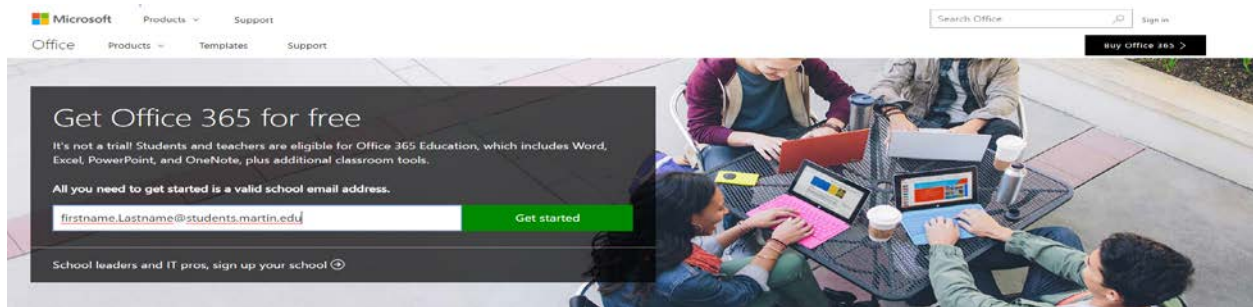


HOW TO INSTALL 0365 FOR EDUCATION

<https://products.office.com/en/student/office-in-education>

Type in your Martin University email address. Click Get Started.



Click I am a Student.

Office 365 Education

Are you a student or a teacher?

We'll provide the Office 365 tools you need in the classroom and online. If you're an IT admin, [enroll your school](#).

[I'm a student](#) ➔

[I'm a teacher](#) ➔

Fill in the required information. An email will be sent to your Martin email account. Place the code from your email in the verification code window. Click Start

Office 365 Education

Create your account

First name Last name

Create password

Confirm your password

We sent a verification code to **first.last@students.martin.edu**. Enter the code to complete signup.

Verification code [resend signup code](#)

Your date of birth [?](#)

Month Day Year

Microsoft will send you promotions and offers about Microsoft products and services for businesses. You can unsubscribe anytime.

By choosing **Start**, you agree to our [terms and conditions](#) and understand that your name and email address will be visible to other people in your institution. [Microsoft Privacy Policy](#)

[Start](#) ➔

Click skip on this screen.

Office 365 Education

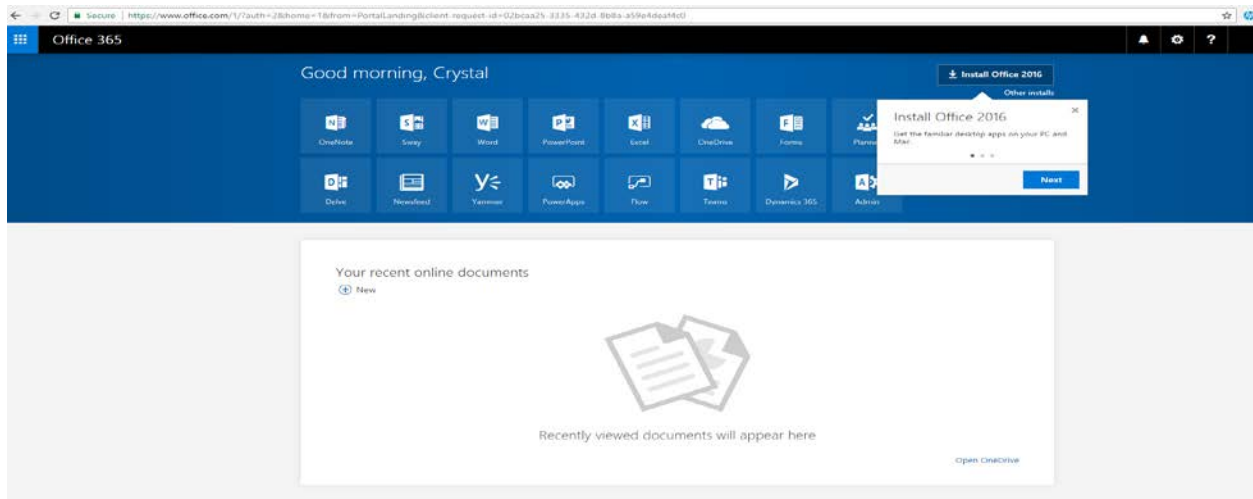
Invite more people

Share the benefits of Office 365 and work together on school projects. It's free.
Who would you like to invite?

User name	@students.martin.edu
User name	@students.martin.edu
User name	@students.martin.edu
User name	@students.martin.edu
User name	@students.martin.edu

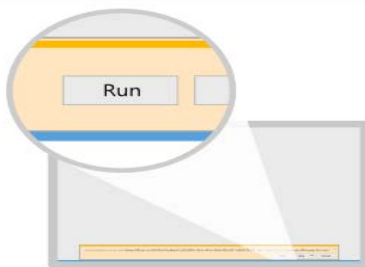
Send invitations →
Skip

You can now click Install Office 2016.



At the bottom on this screen click Run.

Just a few more steps...



1 Click Run

Find it at the bottom of the screen or press Alt+N.



2 Say "yes"

Find it at the bottom of the screen or press Alt+N.



3 Stay online

After installation, start Office and sign in with the account you use for Office 365: Crystal.Hill@students.martin.edu.

Close

Need help installing?

Office applications will begin to install.

 Office

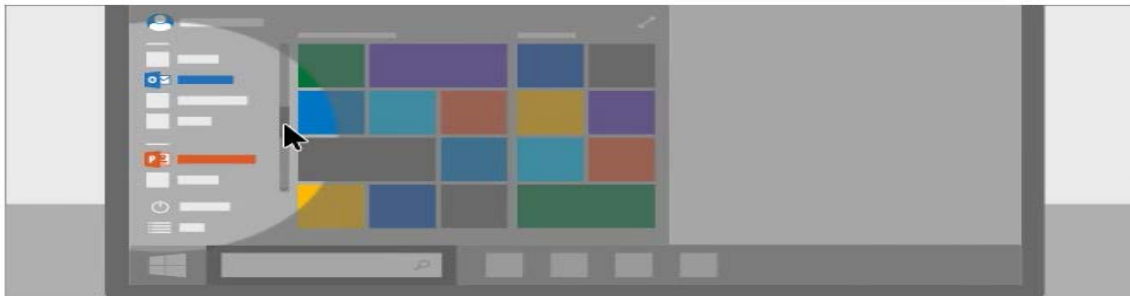


Installing Office

We'll be done in just a moment.

Once installation is completed. Click Close


 Office



You're all set! Office is installed now

Click Start > All Apps.

Close

Click on the windows icon  on the bottom right corner of your screen to view and select Microsoft Office application.

Education license allow you to install office on 5 computers only. To log back into your account

Open your browser, type in WWW.OFFICE.COM

Enter your email address and password you created on page 1