



5902 E. 34th St.
Indianapolis, IN 46218



3841 W. Morris St.
Indianapolis, IN 46241
Phone: (317) 244-7637



7260 Shadeland Station | Indianapolis, Indiana 46256
TEL 317.547.5580 | FAX 317.543.0270
www.structurepoint.com

SWEET GALILEE AT THE WIGWAM - AFFORDABLE ASSISTED LIVING

Anderson, IN

APPROVAL PENDING
NOT FOR CONSTRUCTION

CERTIFIED BY

ISSUANCE INDEX

DATE:	04/26/2019
PROJECT PHASE:	DESIGN DEVELOPMENT

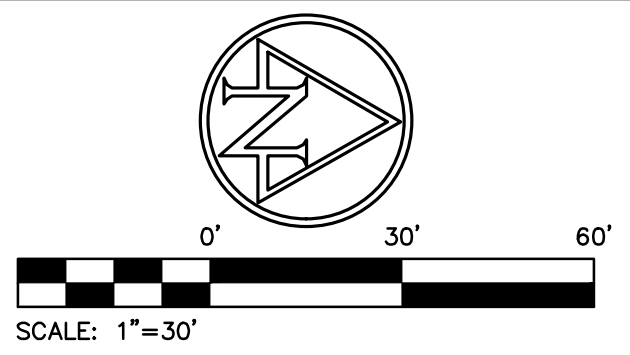
REVISION SCHEDULE

NO.	DESCRIPTION	DATE

Project Number 2017.02041

SITE PLAN

C200



EXISTING LEGEND

- | | | | |
|--|-------------------|--|--------------------------|
| | CURB INLET | | TREE |
| | COMBINATION POLE | | WATER METER |
| | DRAINAGE MANHOLE | | WATER VALVE |
| | FIRE HYDRANT | | OVERHEAD ELECTRIC LINE |
| | GAS MARKER SIGN | | BURIED GAS LINE |
| | GAS VALVE | | BURIED TELEPHONE LINE |
| | GUY WIRE | | BURIED WATER LINE |
| | INLET | | REINFORCED CONCRETE PIPE |
| | LIGHT POLE | | CLAY PIPE |
| | MANHOLE | | 198 PARKING SPACES |
| | POLE | | |
| | POWER POLE | | |
| | SIGN | | |
| | SANITARY MANHOLE | | |
| | TELEPHONE MANHOLE | | |

SITE LEGEND

- | | |
|--|-----------------------------------|
| | LIGHT DUTY ASPHALT PAVEMENT |
| | HEAVY DUTY ASPHALT PAVEMENT |
| | MILL & RESURFACE ASPHALT PAVEMENT |
| | RIGHT-OF-WAY PAVEMENT |
| | CONCRETE |

SITE DATA TABLE

SITE ZONING:	-
PROJECT AREA:	-± ACRES
BUILDING AREA:	- SF
SITE IMPERVIOUS AREA:	-± ACRES
STANDARD PARKING (10'x18'):	- 90
ADA PARKING PROVIDED:	- 8
(INCLUDES 2 VAN ACCESSIBLE)	
FUTURE STANDARD PARKING:	- 113
TOTAL PROPOSED PARKING:	- 211

KEYNOTES

- 6" CONCRETE CURB
- 24" CONCRETE CURB & GUTTER
- 24" CONCRETE GUTTER
- CONCRETE SIDEWALK
- COMBINED CONCRETE CURB & WALK
- CURB TAPER
- ADA ACCESSIBLE RAMP TYPE "X"
- ADA PARKING SPACE (4" BLUE PAINT STRIPE)
- ADA PARKING SYMBOL
- ADA ACCESSIBLE PARKING SIGN
- PARKING SPACE (4" WHITE PAINT STRIPE)
- TRANSFORMER PAD PER UTILITY COMPANY STANDARDS
- DUMPSTER PAD
- CONCRETE WHEEL STOP
- STOP SIGN
- CONCRETE BOLLARD

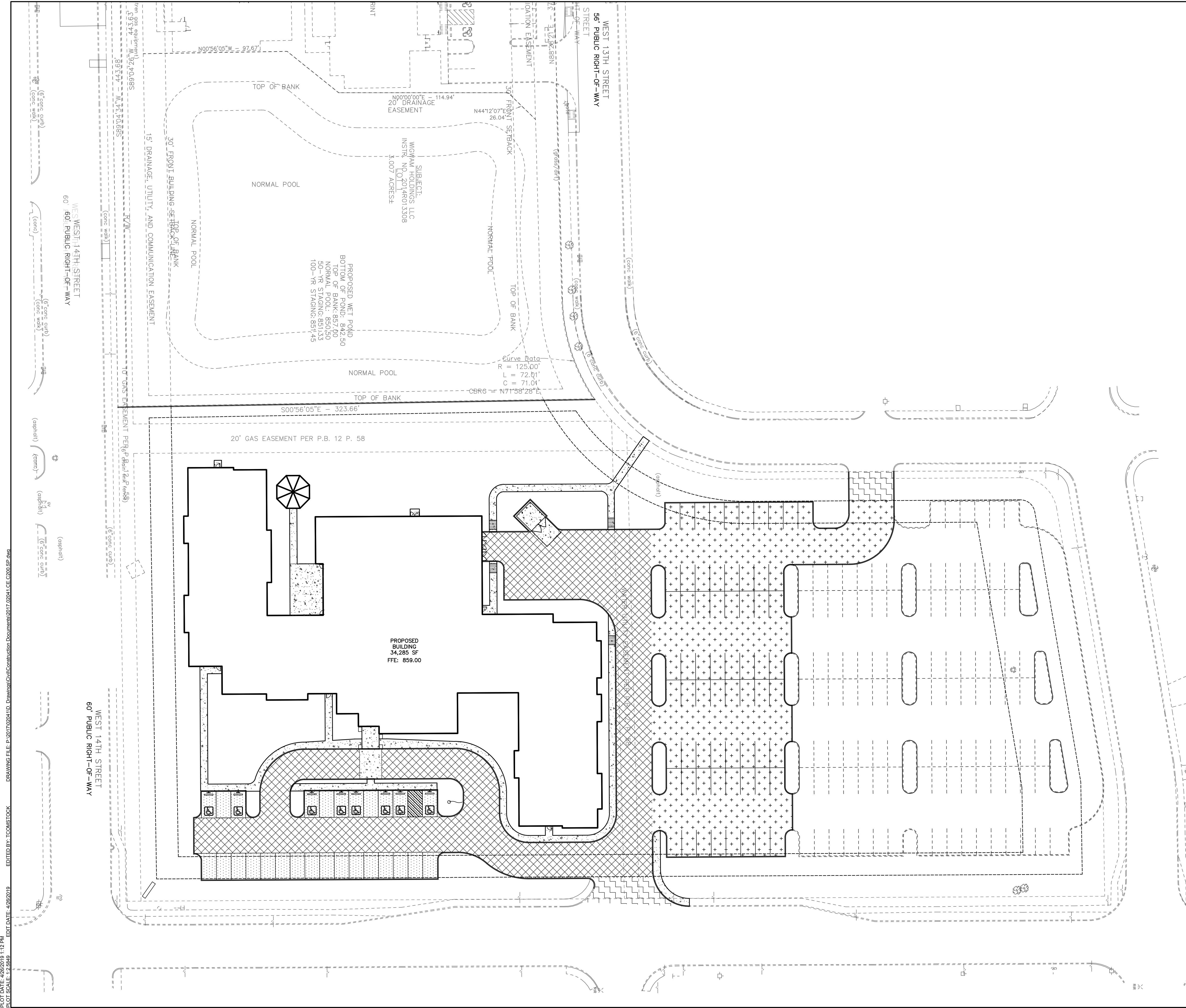
GENERAL NOTES:

- CONTRACTOR SHALL PROTECT AND NOT DESTROY THE PROPERTY CORNER MONUMENTS DURING CONSTRUCTION.
- CONTRACTOR TO VERIFY LOCATION, SIZE AND DEPTH OF EXISTING UTILITIES PRIOR TO COMMENCING ANY CONSTRUCTION. CONTACT ENGINEER IF VARIATION EXISTS.
- SEE SHEET C002 GENERAL NOTES FOR MORE INFORMATION.

IL CAUTION !!

THE LOCATIONS OF ALL EXISTING UNDERGROUND UTILITIES SHOWN ON THIS PLAN ARE BASED UPON ABOVE GROUND EVIDENCE (including, but not limited to, manholes, inlets, valves, and marks made upon the ground by others) AND ARE SPECULATIVE IN NATURE. THERE MAY ALSO BE OTHER EXISTING UNDERGROUND UTILITIES FOR WHICH THERE IS NO ABOVE GROUND EVIDENCE OR FOR WHICH NO ABOVE GROUND EVIDENCE WAS OBSERVED. THE EXACT LOCATIONS OF SAID EXISTING UNDERGROUND UTILITIES SHALL BE VERIFIED BY THE CONTRACTOR PRIOR TO ANY AND ALL CONSTRUCTION.

CALL TOLL FREE
811 OR 1-800-382-5544
- INDIANA UNDERGROUND -



EDIT DATE: 4/26/2019 1:12 PM
PLOT SCALE: 1"=30'
DRAWING FILE: P:\2017\02041\1.D - Drawings\Civil\Construction Documents\2017.02041.CE.C200.SP.dwg
EDITED BY: TCOMSTOCK