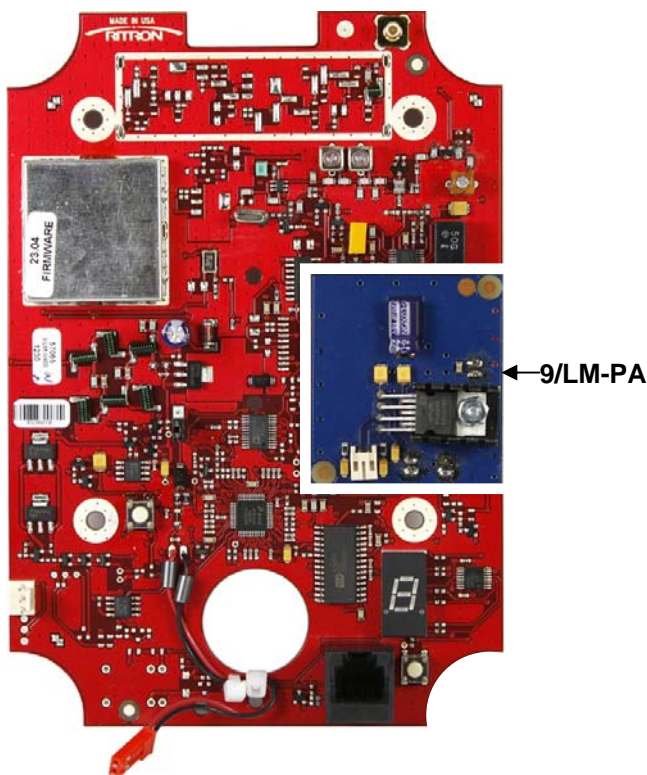


LM-Series Loudmouth Power Supply Requirements

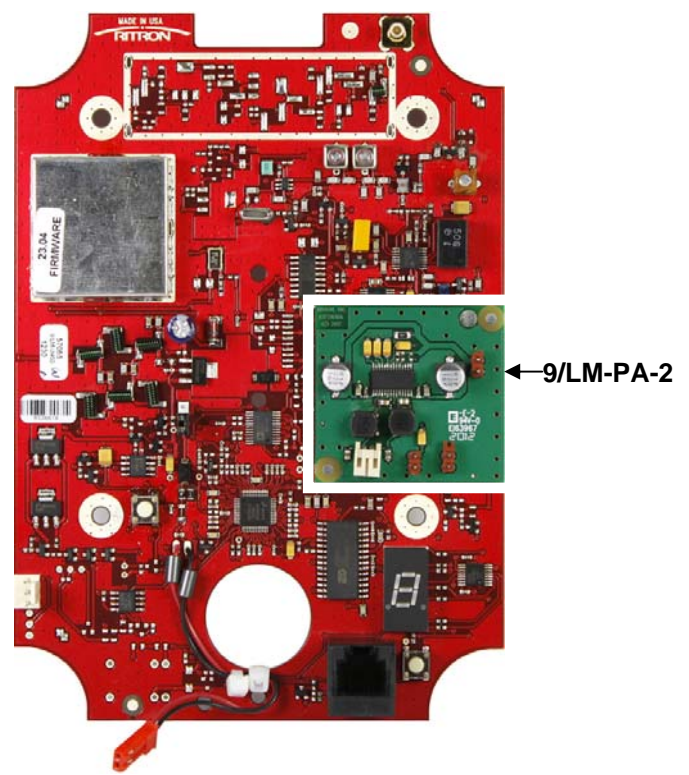
The Ritron LM-Series Loudmouth receiver has different power supply requirements depending upon the audio amplifier module that is installed.

- LM receivers with the 9/LM-PA module require the Ritron model RPS-2B power supply and BP-LM9 Emergency Backup Battery.
- LM receivers with the 9/LM-PA-2 module require the Ritron model RPS-1B power supply and BP-LM8 Emergency Backup Battery.

The audio amplifier module installed is easily identified per the following photos:



LM-Series Loudmouth Receiver with 9/LM-PA installed requires:
RPS-2B 15V, 1.5A power supply
and
BP-LM9 Emergency Back-up Battery



LM-Series Loudmouth Receiver with 9/LM-PA-2 installed requires:
RPS-1B 12V, 1.5A power supply
and
BP-LM8 Emergency Back-up Battery

MODELS AFFECTED:

LM-U450, LM-U450-CANADA, LM-V150, LM-V150-BC, LM-V150-CANADA, 9LM-U450-SP, 9LM-V150-SP