

RITRON **RADIONEXUS** Model: NRB-146D/446D

Configuration of E&M Type Selectable Jumpers

In the Ritron RADIONEXUS Model NRB Series Base Stations, the E&M interface board is jumper selectable for either Type 3 or Type 5 E&M configuration. **The factory default configuration is Type 3 E&M.** The NRB Base Stations may also be configured for Cross-Band Operation using a special cross-over cable, Model# CAT-5-10, ordered through Ritron. To set the NRB Base Station to the desired configuration, follow the procedure below.

NRB Disassembly

1. Remove the (2) screws from the sides of the NRB Base Station.
2. Remove the (2) screws from the bottom of the NRB Base Station.
3. Separate the top and bottom of the NRB Base Station enclosure.

NRB Jumper Selectable Settings

1. Refer to the drawing and programming chart below for the desired configuration.
2. Locate the E&M Interface Board.
3. Place the program jumpers in the correct positions as indicated by the programming chart.

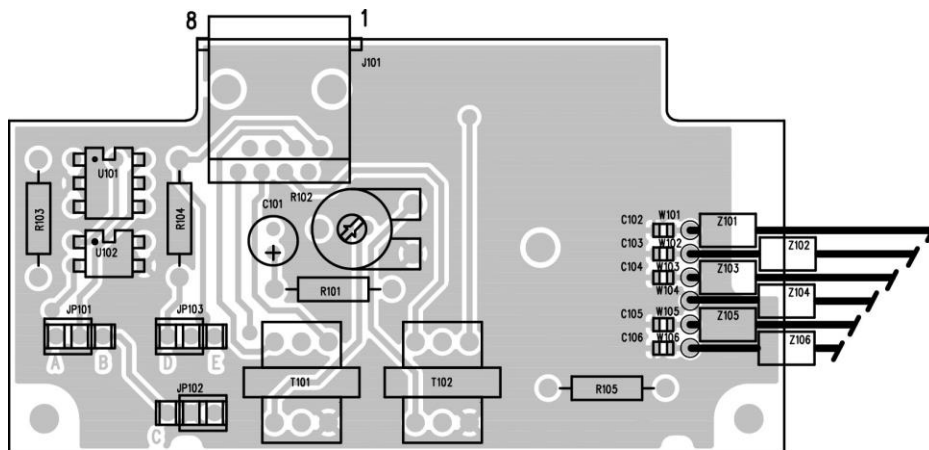
NRB Re-Assembly

1. Place the top and bottom of the NRB Base Station enclosure together.
2. Secure the (2) smaller screws in the bottom of the NRB Base Station enclosure.
3. Secure the (2) larger screws in the sides of the NRB Base Station enclosure.

RJ-45 Pin Descriptions (J101)

Pin	Description
1	V(-) IN (-12 to -48VDC) from IP device (Type 3) / NC (Type 5)
2	Carrier Detect Out (-)
3	Receive Audio Out
4	Transmit Audio In
5	Transmit Audio In
6	Receive Audio Out
7	PTT (-)
8	NC (Type 3) / GND (Type 5)

The factory default configuration is Type 3 E&M



JUMPERS SHOWN IN TYPE 3 CONFIGURATION

JUMPER POSITION					
	A	B	C	D	E
E & M TYPE 3	✓			✓	
E & M TYPE 5		✓	✓		✓
CROSS BAND OPERATION		✓	✓		✓